



The $\text{Ca}^{2+}/\text{H}^{+}$ antiporter TMEM165 expression, localization in the developing, lactating and involuting mammary gland parallels the secretory pathway Ca^{2+} ATPase (SPCA1)



Timothy A. Reinhardt*, John D. Lippolis, Randy E. Sacco

Ruminant Diseases and Immunology Research Unit, USDA/ARS, National Animal Disease Center, Ames, IA 50010, USA

ARTICLE INFO

Article history:

Received 27 January 2014

Available online 12 February 2014

Keywords:

Ca^{2+} -ATPase

TMEM165

Mammary calcium transport

Mammary gland involution

PMCA

SPCA1

SPCA2

ABSTRACT

Plasma membrane Ca^{2+} -ATPase 2 (PMCA2) knockout mice showed that ~60% of calcium in milk is transported across the mammary cells apical membrane by PMCA2. The remaining milk calcium is thought to arrive via the secretory pathway through the actions of secretory pathway Ca^{2+} -ATPase's 1 and/or 2 (SPCA1 and 2). However, another secretory pathway calcium transporter was recently described. The question becomes whether this Golgi $\text{Ca}^{2+}/\text{H}^{+}$ antiporter (TMEM165) is expressed sufficiently in the Golgi of lactating mammary tissue to be a relevant contributor to secretory pathway mammary calcium transport. TMEM165 shows marked expression on day one of lactation when compared to timepoints prepartum. At peak lactation TMEM165 expression was 25 times greater than that of early pregnancy. Forced cessation of lactation resulted in a rapid ~50% decline in TMEM165 expression at 24 h of involution and TMEM165 expression declined 95% at 96 h involution. It is clear that the timing, magnitude of TMEM165 expression and its Golgi location supports a role for this Golgi $\text{Ca}^{2+}/\text{H}^{+}$ antiporter as a contributor to mammary Golgi calcium transport needs, in addition to the better-characterized roles of SPCA1&2.

Published by Elsevier Inc.

1. Introduction

Calcium concentration in milk ranges between 30–80 mM [1–3] compared to 2–2.5 mM in blood. Many Ca^{2+} transporters, channels, and binding proteins are required to coordinate calcium transport into, through and out of the mammary epithelial cell into milk while maintaining submicromolar mammary epithelial cell Ca^{2+} to avoid Ca^{2+} mammary epithelial cell toxicity and cell death [2–12]. The current model of mammary epithelial cell Ca^{2+} transport is evolving rapidly. Recently experiment evidence showed that polarized mammary epithelial cell take up Ca^{2+} via Store-independent Ca^{2+} entry (SICE), at the basolateral membrane by an unconventional interaction between the second isoform of the Golgi secretory pathway Ca^{2+} -ATPase (SPCA2), and the Ca^{2+} influx channel Orai1 [4]. Ca^{2+} entering the mammary epithelial cell then travels one of two possible cellular transport paths to arrive in milk. In the first transport path (accounting for ~40% of calcium in milk) Ca^{2+} entering mammary epithelial cell via Orai1/SPCA2 route is likely rapidly sequestered in Golgi/secretory stores via SPCA1 and/or SPCA2 where it is bound to casein and facilitates casein mi-

celle formation. Ca^{2+} -casein is packaged in secretory vesicles and secreted into milk as Ca^{2+} -casein [2,7,9,13,14]. The second transport pathway (accounting for ~60% of calcium in milk) involves cell Ca^{2+} that is pumped directly across the mammary epithelial cell apical membrane into milk by PMCA2bw [11,15]. The proteins involved in sequestering mammary epithelial cell Ca^{2+} while it is shuttled from the basolateral membrane to PMCA2bw are unknown.

Calcium transport into, through the lactating mammary epithelial cell and into milk is enormous [1–3] with Ca^{2+} playing a critical role in regulation of many aspects of cell function and cell life [16]. Therefore, it is not unexpected that a large number of expressed genes will be required to control the massive transcellular mobilization of Ca^{2+} from the blood into milk by the coordinated action of Calcium Transporters, including pumps, channels, sensors and buffers, in a functional module termed CALTRANS [3]. The critical role of the Golgi in mammary epithelial cell Ca^{2+} transport along with the recent evidence that TMEM165 is a Golgi $\text{Ca}^{2+}/\text{H}^{+}$ antiporter [17] suggested that TMEM165 could be another member of the mammary epithelial cell CALTRANS module. Examination of lactation gene expression experiments in the Gene Expression Omnibus at NCBI [18] showed that TMEM165 mRNA expression was positively correlated with lactation and mRNA was upregulated ~10

* Corresponding author.

E-mail address: tim.reinhardt@ars.usda.gov (T.A. Reinhardt).

times over prepartum levels [19,20] (see: http://www.ncbi.nlm.nih.gov/geo/tools/profileGraph.cgi?ID=GDS2843:160549_at and http://www.ncbi.nlm.nih.gov/geo/tools/profileGraph.cgi?ID=GDS2360:160549_at).

In the present study we show that TMEM165 is Golgi located and its expression is upregulated ~25 times in lactation and down-regulated ~95% in involution which parallels the location and pattern of expression of Golgi calcium pump SPCA1 in mammary tissue [4,9,10].

2. Materials and methods

2.1. Animals

The National Animal Disease Center's Animal Care and Use Committee approved all animal procedures. Lactating 129/SV mice were housed individually, in hanging basket cages on sawdust bedding. All mice were equalized to 6 pups per mouse mother on day one of lactation. Mice were euthanized at 10, 7, 3 and 1 days prepartum and 1, 3, 6, 12 and 18 days postpartum for tissue collection. Involution was initiated by removal of pups on day 12 of lactation for some mice. Starting on day 12 of lactation (time zero of involution), mice were euthanized at time zero, 24, 48, 72 and 96 h of involution. Mice were euthanized with a 50:50 mix of CO₂:O₂ followed by decapitation. Mammary tissue was removed, flash frozen in liquid N₂, and stored at –70 °C until membranes were prepared.

2.2. Mammary tissue microsomes

Microsomes were prepared as previously described [11]. Briefly, tissue was homogenized in 10 volumes of Buffer A which contained; Tris–HCl (10 mM), MgCl₂ (2 mM), EDTA (1 mM), protease inhibitor cocktail (Sigma, St. Louis, MO) at pH 7.5. The homogenate was mixed with an equal volume of Buffer B (Buffer A plus 0.3 M KCl) and centrifuged at 4000g for 10 min. The supernatant was collected, adjusted to 0.7 M KCl by the addition of solid KCl, and centrifuged at 100,000g for 1 h. The supernatant was discarded and the pellets were resuspended in Buffer C (Buffer A plus 0.15 M KCl). Membrane preparations were stored at –70 °C until assayed. Microsomes from PMCA2 wild type and knockout mice were prepared exactly as described [11].

2.3. Gel electrophoresis and Western blotting

The methods were basically as described previously [4,11]. Microsomes from mammary tissue were incubated for 15 min at room temperature in a modified Laemmli buffer containing 150 mg/ml urea and 65 mM DTT. Samples were then electrophoresed for 50 min at 200 V in a 4–12% Novex NuPAGE® Bis-Tris Gel using MOPS SDS running buffer (Life Technologies, Grand Island, NY). Proteins were transferred to nitrocellulose membranes using the iBlot Dry Blotting System (Life Technologies, Grand Island, NY) at 23 V for 7 min. The blots were blocked with StartingBlock T20 (Thermo Fisher Scientific Inc.). TMEM165 (Proteintech, Chicago, IL), SPCA1 (RS-1 #227) or SPCA2 (orange #2) antibodies were diluted 1/2000 in StartingBlock T20 and the blots were incubated over night at 4 °C. After washing they were incubated 1 h at RT with 1/50000 HRP goat anti-rabbit #31460 (Thermo Fisher Scientific Inc.) and washed. Blots were developed using Pierce's Super-signal (Pierce Products, Rockford, IL) using the protocol provided by the manufacturer. Developed film was imaged and bands quantitated with a Gel Doc EZ imager (BioRad, Hercules, CA). Proteins were determined using the BioRad Protein Assay Kit using a BSA standard. Anti-SPCA2, and SPCA1 were described previously [4,9,10].

2.4. Confocal immunofluorescence microscopy

Tissue samples were prepared for and immunofluorescence microscopy was performed as described [4]. Primary antibodies used were anti-TMEM165-aminoterminal end (Abcam, Cambridge, MA) 1/100 anti-GM130 #610822 (BD Transduction Laboratories, San Jose, CA). SPCA1 (1/100) and SPCA2 (1/100) antibodies are described above. Secondary antibodies were (1:1000) Green anti-mouse Alexa Fluor A11017 488 F(ab')₂ fragment of goat anti-mouse IgG(H + L), and Red anti-rabbit at 1:1000 Alexa Fluor A11070 594 F(ab')₂ fragment of goat anti-rabbit IgG (H + L) (Molecular Probes/Life Technologies, Grand Island, NY). Slides were viewed and photographed on Zeiss LSM 5 PASCAL Axioplan 2 Imaging (Carl Zeiss, Germany).

2.5. Statistics

Statistics were done using the JMP statistical package (SAS Institute Inc. Cary, NC). Replicates were $n = 4$ –5 mice and the data are presented as means \pm SEM.

3. Results

The patterns of TMEM165 protein expression in mammary tissue of mice at 11 days of pregnancy to 18 days of lactation were examined by Western blot. Fig. 1A shows that TMEM165 protein expression was up significantly ($P < 0.05$) by 3 days prepartum and its expression peaked at day 12 of lactation at ~25 times ($P < 0.01$) the level of expression seen in early pregnancy. Forced mammary involution due to abrupt cessation of lactation on day 12 is associated with rapid accumulation of mammary calcium and a rise in blood calcium [10] which correlates in part with ~50% decline ($P < 0.01$) in TMEM165 expression 24 h of involution and TMEM165 expression declined 95% at 96 h involution (Fig. 1B).

In previous work we had shown that loss of the primary mammary epithelial cell calcium pump PMCA2bw was associated with significant compensatory upregulation of other calcium transporters such as SPCA1 and SERCA2 [11] TMEM165 expression was shown to be significantly ($P < 0.01$) up in PMCA2 knockouts compared to wild type expression (Fig. 1C) which is suggestive of a calcium transport role for TMEM165 in mammary epithelial cell lactation.

Fig 2 shows that TMEM165 co-localizes with the Golgi marker, GM130, (top panels) which is nearly identical to how SPCA1 co-localizes with the Golgi marker, GM130 (middle panels) in lactating mammary tissue. SPCA2 (bottom panels) in contrast has a diffuse vesicular distribution, with little co-localization with Golgi marker GM130. This is in marked contrast to the similarities between TMEM165 and SPCA1 mammary localization. Finally Fig. 3 shows mammary TMEM165 staining with GM130 at selected times during pregnancy, lactation and involution which are in agreement with Western blot data (Fig. 1).

4. Discussion

Lactating mammary cell calcium homeostasis is maintained by the high expression of SPCA1, SPCA2 and PMCA2, which move and control the enormous amounts of calcium required for milk production into storage compartments such the Golgi or out to milk [4,9–11,21]. The molecular identity of additional calcium transport pathways in lactating mammary epithelial cell remains unknown. Genome-wide screens [14] have been used in an attempt to reveal additional Calcium Transporters, including pumps, channels, sensors and buffers, in a functional module termed CALTRANS [3]. However, the success of microarray or transcriptomics approaches

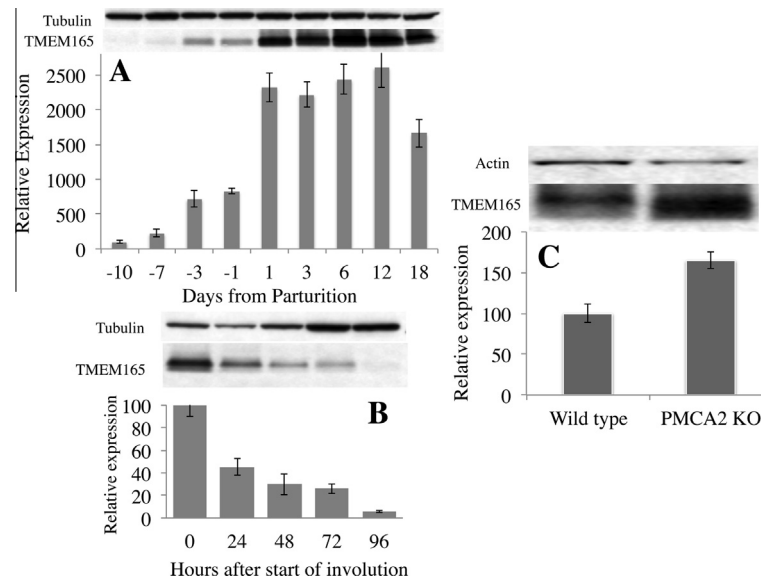


Fig. 1. (A) Expression of TMEM165 $\text{Ca}^{2+}/\text{H}^{+}$ antiporter during lactation. Mouse mammary tissue microsomes, starting from day 10 prior to parturition, were evaluated for TMEM165 expression by Western blotting. Loading was normalized relative to tissue DNA concentrations, and expressed relative to starting levels at Day-10. Data are means \pm SE ($n = 4$ –5 mice/time point). (B) Expression of TMEM165 $\text{Ca}^{2+}/\text{H}^{+}$ antiporter during involution. Western blots and mammary microsome TMEM165 $\text{Ca}^{2+}/\text{H}^{+}$ antiporter expression changes from time zero (day 12 of lactation) of mammary involution through 96 h into mammary involution. Data are means \pm SE ($n = 4$ mice/time point). (C) Comparative expression of TMEM165 $\text{Ca}^{2+}/\text{H}^{+}$ antiporter in lactating mammary tissue microsomes from wild type vs PMCA2 knockout mice. Data are means \pm SE ($n = 4$ mice/time point).

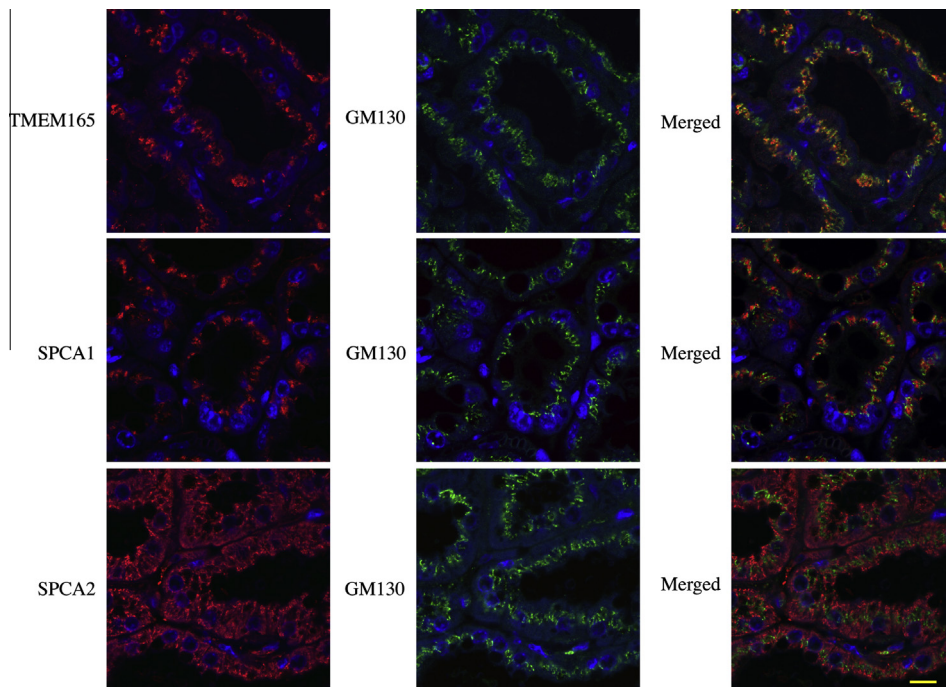


Fig. 2. Immunofluorescence confocal microscopy of TMEM165 $\text{Ca}^{2+}/\text{H}^{+}$ antiporter in lactating mouse tissue compared to the secretory pathway calcium pumps SPCA1&2. (A) TMEM165 co-localizes with the Golgi marker, GM130. (B) SPCA1 co-localizes with the Golgi marker, GM130 in much the same manner as TMEM165. (C) SPCA2 in contrast has a diffuse vesicular distribution, with little co-localization with Golgi marker GM130. That is in marked contrast to the similarities between TMEM165 and SPCA1 mammary localization. Nuclei were stained by DAPI.

to identify new CALTRANS members is predicated on accurate high quality functional annotation of expressed genes. Functional evidence for TMEM165 as a Golgi $\text{Ca}^{2+}/\text{H}^{+}$ antiporter is very recent [17] and that suggested to us that TMEM165 could be another member of the lactating mammary epithelial cell CALTRANS module.

In fact, retrospective examination of lactation gene expression experiments in the Gene Expression Omnibus at NCBI [18] showed that TMEM165 mRNA expression was positively correlated with lactation and mRNA was upregulated ~ 10 times over prepartum levels [19,20] and declined back to baseline during mammary involution (<http://www.ncbi.nlm.nih.gov/geo/tools/profileGraph.cgi?ID=GDS>

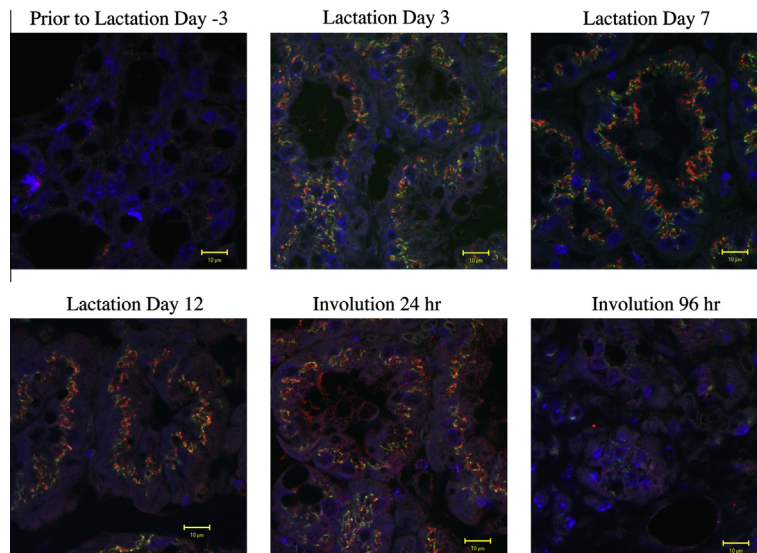


Fig. 3. Immunofluorescence confocal microscopy of TMEM165 $\text{Ca}^{2+}/\text{H}^{+}$ antiporter in mouse tissue at selected times during pregnancy, lactation and involution. Tmem165 represented by red, GM130 by green and nuclei by DAPI blue. TMEM165 co-localizes with the Golgi marker, GM130 except day 3 prior to lactation and 96 h of involution when expression of both proteins is near the detection limits of this assay. (For interpretation of the references to color in this figure legend, the reader is referred to the web version of this article.)

2843:160549_at and http://www.ncbi.nlm.nih.gov/geo/tools/profileGraph.cgi?ID=GDS2360:160549_at). Protein expression data in Fig 1A and B lactation gene expression experiments and clearly demonstrates TMEM165 expression peaked at day 12 of lactation at ~25 times the level of expression seen in early pregnancy while returning to baseline in involution. It should be noted that TMEM165 $\text{Ca}^{2+}/\text{H}^{+}$ antiporter expression is nearly maximal as early as day 1 of lactation, which is similar in magnitude and timing to that observed for Golgi located SPCA1 in lactating mammary epithelial cell [4,9].

Further indirect evidence for a TMEM165 Ca^{2+} transport role in lactating mammary epithelial cell comes from its apparent compensatory upregulation following loss of PMCA2 (Fig. 1C). Both over expression and loss of major calcium pumps has been previously associated with compensatory expression changes in other key calcium transporters or calcium binding proteins [11,21] further supporting their function in calcium transport.

TMEM165 and SPCA1 both are primarily located in the Golgi of lactating mammary epithelial cell (Fig. 2) and each protein has dual functions. SPCA1 can act as both a Ca^{2+} and/or Mn^{2+} transporter [22,23] but does not counter transport H^{+} . TMEM165 on the other hand can transport Ca^{2+} into mammary epithelial cell Golgi while removing excess H^{+} [17]. It is clear that coordination of mammary epithelial cell Golgi Ca^{2+} , Mn^{2+} and pH will be critical as all are required for the efficient Golgi mammary epithelial cell production of lactose and casein micelles [2,24]. SPCA2's non-Golgi, distributed vesicular like location (Fig. 2) in lactating mammary epithelial cell supports its mammary epithelial cell calcium influx functions as described [3,4] as well as yet to be studied functions in secretory vesicles [25].

Final resolution of TMEM165 role in calcium transport in lactating mammary epithelial cell will come from the study of the TMEM165 knockout mouse (<http://www.mousephenotype.org/data/genes/MGI:894407>) whose lactation phenotype has not been examined. The crossing of the TMEM165 knockout mouse with a yet to be developed conditional SPCA1 knockout will provide critical function information for these two highly expressed Golgi mammary calcium transporters in lactation. It is however, clear that the timing, magnitude of TMEM165 expression and its Golgi location supports a role for this Golgi $\text{Ca}^{2+}/\text{H}^{+}$ antiporter as a

contributor to mammary Golgi calcium transport needs along with SPCA1&2.

Acknowledgments

We thank Tera Nyholm, Adrienne Staple, Derrel Hoy and Duane Zimmerman for their excellent technical support and animal care in support of these studies. We thank Dr. Gary Shull for providing the PMCA2 knockout mice.

References

- [1] R.L. Horst, J.P. Goff, T.A. Reinhardt, Adapting to the transition between gestation and lactation: differences between rat, human and dairy cow, *J. Mammary Gland Biol. Neoplasia* 10 (2005) 141–156.
- [2] M.C. Neville, Calcium secretion into milk, *J. Mammary Gland Biol. Neoplasia* 10 (2005) 119–128.
- [3] B.M. Cross, G.E. Breitwieser, T.A. Reinhardt, R. Rao, Cellular calcium dynamics in lactation and breast cancer: from physiology to pathology, *Am. J. Physiol. Cell Physiol.* (2013), <http://dx.doi.org/10.1152/ajpcell.00330.2013>.
- [4] B.M. Cross, A. Hack, T.A. Reinhardt, R. Rao, SPCA2 regulates Orai1 trafficking and store independent Ca^{2+} entry in a model of lactation, *PLoS One* 8 (2013) e67348.
- [5] Z. Dong, P. Saikumar, J.M. Weinberg, M.A. Venkatachalam, Calcium in cell injury and death, *Annu. Rev. Pathol.* 1 (2006) 405–434.
- [6] M.R. Duchon, A. Verkhratsky, S. Muallem, Mitochondria and calcium in health and disease, *Cell Calcium* 44 (2008) 1–5.
- [7] H.M. Faddy, C.E. Smart, R. Xu, G.Y. Lee, P.A. Kenny, M. Feng, R. Rao, M.A. Brown, M.J. Bissell, S.J. Roberts-Thomson, G.R. Monteith, Localization of plasma membrane and secretory calcium pumps in the mammary gland, *Biochem. Biophys. Res. Commun.* 369 (2008) 977–981.
- [8] M. Feng, D.M. Grice, H.M. Faddy, N. Nguyen, S. Leitch, Y. Wang, S. Muend, P.A. Kenny, S. Sukumar, S.J. Roberts-Thomson, G.R. Monteith, R. Rao, Store-independent activation of Orai1 by SPCA2 in mammary tumors, *Cell* 143 (2010) 84–98.
- [9] T.A. Reinhardt, A.G. Filoteo, J.T. Penniston, R.L. Horst, Ca^{2+} -ATPase protein expression in mammary tissue, *Am. J. Physiol. Cell Physiol.* 279 (2000) C1595–C1602.
- [10] T.A. Reinhardt, J.D. Lippolis, Mammary gland involution is associated with rapid down regulation of major mammary Ca^{2+} -ATPases, *Biochem. Biophys. Res. Commun.* 378 (2009) 99–102.
- [11] T.A. Reinhardt, J.D. Lippolis, G.E. Shull, R.L. Horst, Null mutation in the gene encoding plasma membrane Ca^{2+} -ATPase isoform 2 impairs calcium transport into milk, *J. Biol. Chem.* 279 (2004) 42369–42373.
- [12] M. Brini, T. Cali, D. Ottolini, E. Carafoli, The plasma membrane calcium pump in health and disease, *FEBS J.* 280 (2013) 5385–5397.
- [13] T.A. Reinhardt, R.L. Horst, Ca^{2+} -ATPases and their expression in the mammary gland of pregnant and lactating rats, *Am. J. Physiol.* 276 (1999) C796–C802.

- [14] J.N. VanHouten, J.J. Wysolmerski, Transcellular calcium transport in mammary epithelial cells, *J. Mammary Gland Biol. Neoplasia* 12 (2007) 223–235.
- [15] J.N. VanHouten, M.C. Neville, J.J. Wysolmerski, The calcium-sensing receptor regulates plasma membrane calcium adenosine triphosphatase isoform 2 activity in mammary epithelial cells: a mammary epithelial cell hanism for calcium-regulated calcium transport into milk, *Endocrinology* 148 (2007) 5943–5954.
- [16] D.E. Clapham, Calcium signaling, *Cell* 131 (2007) 1047–1058.
- [17] D. Demaegd, F. Foulquier, A.S. Colinet, L. Gremillon, D. Legrand, P. Mariot, E. Peiter, E. Van Schaftingen, G. Matthijs, P. Morsomme, Newly characterized Golgi-localized family of proteins is involved in calcium and pH homeostasis in yeast and human cells, *Proc. Natl. Acad. Sci. USA* 110 (2013) 6859–6864.
- [18] R. Edgar, M. Domrachev, A.E. Lash, Gene expression omnibus: NCBI gene expression and hybridization array data repository, *Nucleic Acids Res.* 30 (2002) 207–210.
- [19] S.M. Anderson, M.C. Rudolph, J.L. McManaman, M.C. Neville, Key stages in mammary gland development. Secretory activation in the mammary gland: it's not just about milk protein synthesis!, *Breast Cancer Res* 9 (2007) 204.
- [20] M. Ron, G. Israeli, E. Seroussi, J.I. Weller, J.P. Gregg, M. Shani, J.F. Medrano, Combining mouse mammary gland gene expression and comparative mapping for the identification of candidate genes for QTL of milk production traits in cattle, *BMC Genomics* 8 (2007) 183.
- [21] T.A. Reinhardt, R.L. Horst, W.R. Waters, Characterization of Cos-7 cells overexpressing the rat secretory pathway Ca^{2+} -ATPase, *Am. J. Physiol. Cell Physiol.* 286 (2004) C164–C169.
- [22] V.K. Ton, D. Mandal, C. Vahadj, R. Rao, Functional expression in yeast of the human secretory pathway $\text{Ca}(2+)$, $\text{Mn}(2+)$ -ATPase defective in Hailey-Hailey disease, *J. Biol. Chem.* 277 (2002) 6422–6427.
- [23] I. Vandecaetsbeek, P. Vangheluwe, L. Raeymaekers, F. Wuytack, J. Vanoevelen, The Ca^{2+} pumps of the endoplasmic reticulum and Golgi apparatus, *Cold Spring Harb. Perspect. Biol.* 3 (2011).
- [24] N.J. Kuhn, S. Ward, W.S. Leong, Submicromolar manganese dependence of Golgi vesicular galactosyltransferase (Lactose synthetase), *Eur. J. Biochem.* 195 (1991) 243–250.
- [25] L.H. Li, X.R. Tian, Z. Jiang, L.W. Zeng, W.F. He, Z.P. Hu, The Golgi apparatus: panel point of cytosolic Ca^{2+} regulation, *Neurosignals* (2013).